



Franchise Profile



Shine[®] Tutorial

AN ISO 9001 : 2008 CERTIFIED INSTITUTE

HEAD OFFICE : 1ST Floor, Chaudhury Complex, Near Gadagadia Chhak,
Balasore, Orissa. Pin-756003, PH:-06782-329228 MOB : +91-9337040484, +91-9437173550

SHINE INSTITUTE OF MANAGEMENT AND INFORMATION TECHNOLOGY PVT. LTD.

AN ISO 9001 : 2008 CERTIFIED INSTITUTE



“The mission of ISO is to promote development of standardization and related activities in the world with a view to facilitating the international exchange of goods and services, and to developing cooperation in the spheres of intellectual, scientific, technological and economic activity.”

The International Organization for Standardization (ISO) is a worldwide Federation of National Standards bodies from some 126+ countries, one from each country.

Specialties Regarding ISO 9001 : 2008 Certified Organization.

- ✦ ISO is a Trade Mark which gives you a Shape to your Career.
- ✦ Conceptual Studies with best faculties which give the best direction.
- ✦ ISO Certified Organization adding value to your Certificate with a legal validity.
- ✦ By this Certificate you can be recognized globally.
- ✦ To Concrete your idea you have Proper Concept + Quality Training Programme + Conceptual Study + Faith on your Certificate = Simply we care your Career
- ✦ You are an indefinite winner for employment race.
- ✦ In any organizational interview /Campus Programme ISO assists you more than any other.
- ✦ ISO Certified Organization (SIMIT) gives you Qualitative, Specialized , effective and Job Oriented Courses for improvement of Students.



INTRODUCTION

Shine Institute under its management and control have launched

“ Shine Tutorial ”

To prepare the students for AIEEE, O-JEE, ITT-JEE , Railway, Banking, MBA and other national level Entrance Tests and +2 Sc. Examinations. Backed by a team of experts and experienced faculties to help students develop a heightened sense of awareness.

PURPOSE

For students with an ambition to score well in the AIEEE, O-JEE, ITT-JEE, MBA (CAT,MAT,XAT), Railway, Banking and +2 sc. Examinations and pursue their career to achieve success.



MISSION

Shine Tutorial runs its own centers and also through our Franchise's centers having excellent infrastructure and locations. Education standards are paramount and same standard are maintained at our own centers and all the centre of Franchise at all levels, course materials are prepared and updated time to time.

TEACHING METHODOLOGY

Study materials , Coaching modules , class room sessions include theoretical aspects, the knowledge of conceptualization process , time management and self accessment.

Shine Tutorial aims at providing the students with all possible opportunities to prosper. More and more importance is given on overall personality and knowledge development of the students and enables them to learn and grow.

FACULTY

Faculty comprises of experienced academicians. Teaching methodology and monitoring mechanism are specifically designed to articulate various dimensions which ensures an enviable confidence and alertness in our students, to take on the world and carve out their niche in future world. Faculty provide solutions on the most practical format offering AIEEE, O-JEE, ITT-JEE , MBA (CAT,MAT,XAT), Railway, Banking and +2 Sc. Examinations with a contemporary curriculum and infrastructure for sustainable development.



EXCLUSIVE STUDY MATERIALS

“Study materials are designed and updated as per the patterns , adopted in the test and examinations.

Shine Tutorial is able to cope with large students population and charging requirement of fundamental skills.

Centralized system of publication of study materials, examinations & Question Papers prepared exclusively for Shine Tutorial at per with all India Standard.

Extensive content coverage with the innovative instruction delivery methods.



We Offer **FRANCHISE** to set up **Shine Tutorial**

- ⇒ Reasonable Franchisee Fee and Royalty fees.
- ⇒ Flexibility in paying royalty and Franchisee Fee in installment.
- ⇒ No need of prior experience to open Franchisee Centre.
- ⇒ High returns , better margin of profit in comparison with other training centres.
- ⇒ Low cost initial investment.
- ⇒ Flexibility in Total investment.
- ⇒ Franchisee centre will operate under the Brand of Shine Tutorial.
- ⇒ Technical and marketing support to establish Franchise Centre will be provided by the FRANCHISOR / Shine Tutorial.
- ⇒ All possible consultation and guidance , choice of locations , equipments, furnishing , advertising , marketing and Flexibility in paying royalty and Franchisee Fee in installment.



We Believe in Unity

- ⇒ Technical and marketing support to establish Franchise Centre will be provided by the FRANCHISOR / Shine Tutorial.
- ⇒ All possible consultation and guidance, choice of locations, equipments, furnishing, advertising, marketing and recruitment of Faculty members will be guided by the Shine Tutorial.
- ⇒ Our Experienced faculty members will visit Franchisee Centres and if required shall conduct class room sessions.
- ⇒ A range of programmes for long term to short term professional courses and part time programmes.
- ⇒ Flexibility to offer as many as batches as possible.
- ⇒ It is convenient to start Shine Tutorial.
- ⇒ To start up a franchise Centre financial stability and sincerity for the purpose are essential.
- ⇒ There must be an Agreement between the Franchisor and the Franchisee.
- ⇒ For Successfully running Franchisee centre , consistent communication and meetings between the Franchisor and franchisee on regular basis are essential.
- ⇒ A centre in-Charge should be a man of vision, hardworking , able to deal with all challenges at work and create a positive and inspiring atmosphere at the centre.
- ⇒ For smooth conduct of training programmes the franchisee shall submit report regularly on admission, follow up performance analysis , examination , change (if any) in the faculty and acquisition of new teaching aids.
- ⇒ Franchisor will provide one time training to Franchisee's staff members as part of Franchisee establishment programme.
- ⇒ Guidance will be provided by the Shine Tutorial for strict administration and class room sessions of the Franchise Centre.
- ⇒ Promotional and Marketing materials like Flex board , banner , news paper advertisement , leaflets etc. shall be designed and provided by the Franchisor and cost of such materials shall be borne equally by the parties.



For Details please meet our Franchisee Development Officer at Head Office.

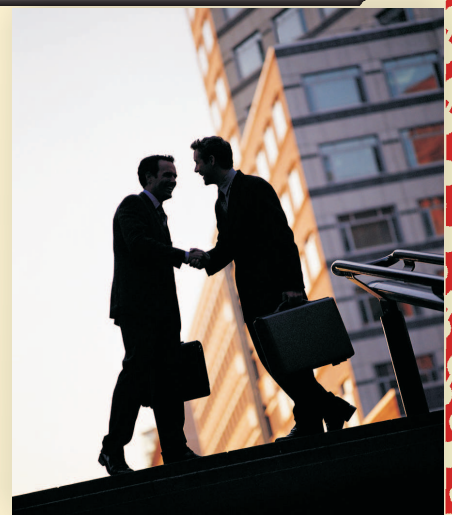


1st Floor , Choudhury Complex, Near Gadagadia Chhak
Balasore, Pin :- 756003, Odisha, India.

You may visit our website : www.shineindia.org

You may e-mail us : bidhubhusan123@rediffmail.com
shineforindia@gmail.com

May Call: **06782-329338 , +91-9437173550, +91-9337040484.**
You may contact Zonal Office(JHARKHAND): **+91-9234532393, +91-9334624331.**



Are You Searching for Bright Future !

Courses Provided

AIEEE

O-JEE
(ENGINEERING)

MBA [CAT, MAT, XAT]

+2 Sc. [INTEGRATED]

IIT - JEE

e-Card (Study at Home)

Coaching & Online Testing ↓

Bank-(PO & Clerk)

BSNL-JTO

AIMS

AIPMT

IES

BITS

CA & CPT

CBSE (Class VII to XII)

Railway(Tech & Non Tech)

OAS & IAS

AIEEE & IIT-JEE

MBA (CAT, MAT, XAT)

SSC, Police (SI), Auditor, LIC (AAO, Asst.)

Diploma Entrance (Matric & Lateral)

JOIN TODAY

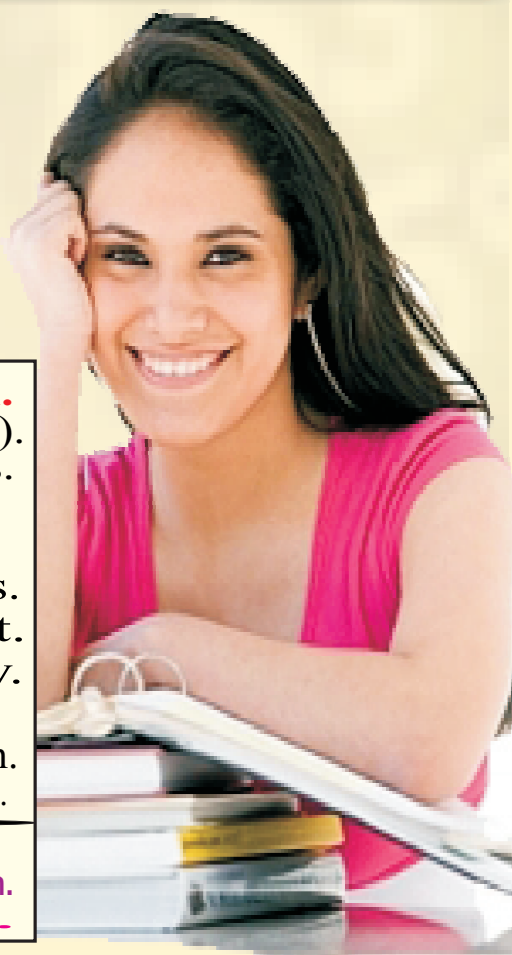
Shine[®] Tutorial

AN ISO 9001 : 2008 CERTIFIED INSTITUTE

Facilities

- **An ISO 9001:2008 Certified Institution.**
- Exclusive Questions (Delhi & Kota Pattern).
- Own Branded & updated Study Materials.
- On-line Test & Teaching.
- Competent & well-experienced Faculty Team.
- GD & Personality Development Classes.
- Weekly & Monthly Aptitude Test.
- Digital & Physical Library Facility.
- Monthly Performance Reports.
- Well furnished Classrooms with Computerization.
- Shine Tutorial is Wholly owned and managed by Shine.

- **24 Hours Internet**
- **More Than 20 years Entrance Questions with solution.**
- **Individual care.**



- E**mphasising Thinking
- D**eveloping Helth Mind
- U**nderlining Life Skills
- C**reating talents
- A**dvocating Faith in God
- T**raining Sports Skills
- I**nculcating Values
- O**ffering Personality Development
- N**urturing Graceful Growth





Every Bad situation will have something positive...
Even a stopped clock is correct twice a day...
Think of this and lead your life...

OUR CENTRE